

680 Rhode Island Ave, NE Washington DC

PUD Application

© 2015 SK&I Architectural Design Group, LLC.



PROPERTY OWNER
B + R Associates LP

DEVELOPMENT TEAM

DEVELOPER / APPLICANT
MRP Rhode Island Avenue Investors LLC

LAND USE COUNSEL
Goulston & Storrs

ARCHITECT
SK&I Architectural Design Group, LLC

CIVIL ENGINEER
Bowman Consulting

TRAFFIC CONSULTANT
Gorove / Slade

LANDSCAPE ARCHITECT
Oculus

MRP | REALTY

680 Rhode Island Ave. | Washington, DC

Cover Sheet

April 29, 2016 | 0.00

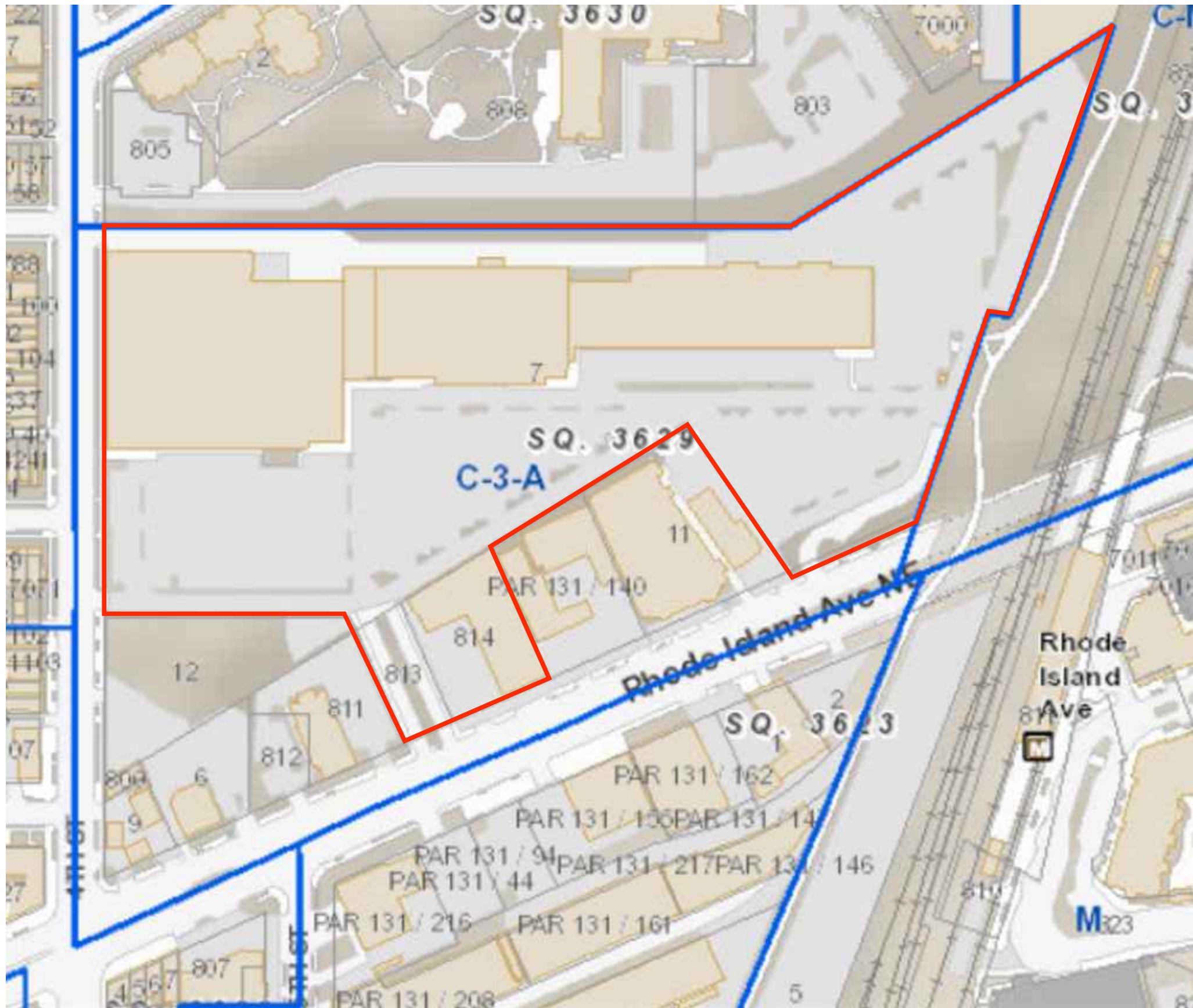
SK+I
ARCHITECTURE

ZONING COMMISSION
District of Columbia
CASE NO.15-16
EXHIBIT NO.31E1

DRAWING INDEX

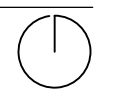
STAGE	Sheet No.	Description	STAGE	Sheet No.	Description	STAGE	Sheet No.	Description	STAGE	Sheet No.	Description			
STAGE 1	0.00	Cover Sheet	STAGE 1	L1.01	Illustrative Site Plan	STAGE 2	0.10	Development Data	STAGE 1	2.001	Block 2 Development Data	STAGE 1	C-1	General Notes
	0.01	Sheet List		L1.02	Urban Fabric Diagram		0.11	Block 1A and 1B Affordable Unit Mix		2.101	Block 2 Garage Plan Level 1		C-2	Existing Conditions
	0.02	Location Map		L1.03	Public Space Diagram		0.21	Site Aerial		2.102	Block 2 First Floor Plan		C-3	Stage 1 Overall Site Plan
	0.03	Surveyor's Plat		L1.04	Public Framework Diagram		0.22	Site Aerial		2.103	Block 2 2nd Floor Plan		C-4	Stage 1 Site Plan (1 of 2)
	0.04	Site Plan		L1.05	Vehicular Circulation		0.23	Site Aerial		2.104	Block 2 3rd-7th Floor Plan		C-5	Stage 1 Site Plan (2 of 2)
	0.05	Context		L1.06	Pedestrian Circulation		0.24	Site Aerial		2.105	Block 2 Roof Plan		C-6	Stage 1 Overall Grading Plan
	0.06	Context		L1.07	Cycle Circulation		0.30	Site Phasing Plan		2.301	Block 2 Sections		C-7	Stage 1 Overall Utility Plan
0.06	Context	L1.08		Grading Plan	0.40		Block Measuring Point Plan	3.001		Block 3 Development Data	C-8		Overall Stormwater Management Plan	
0.07	Context	L1.09		Bryant Street Park Respite	1.001		Block 1& 5b Development Data	3.101		Block 3 Garage Plan Level G3	C-9		Overall Lot Area	
		L1.10		Bryant Street Park - Every Day Use	1.101		Block 1A and 1B Garage Plan Level G3	3.102		Block 3 Garage Plan Level G2	C-10		Blocks Area	
		L1.11		Bryant Street Park - Special Events	1.102		Block 1A and 1B Garage Plan Level G2	3.103		Block 3 Garage Plan Level G1				
		L1.12		Bryant Street Park - Entertainment	1.103		Block 1A and 1B Garage Plan Level G1	3.104		Block 3 First Floor Plan	STAGE 2	C-11	Stage 2 Site Plan	
		L1.13		Bryant Street Park - Art in the Park	1.104		Block 1A and 1B 1st Floor Plan	3.105		Block 3 2nd Floor Plan		C-12	Stage 2 Grading Plan	
		L1.14		Bryant Street Trail Improvements	1.105		Block 1A and 1B 2nd Floor Plan	3.106		Block 3 3rd-7th Floor Plan		C-13	Stage 2 Utility Plan	
		L1.15		Access Staircase	1.106		Block 1A and 1B 3rd-7th Floor Plan	3.107		Block 3 Roof Plan		C-14	Stage 2 Erosion and Sediment Control Plan	
		L1.16	Access Staircase - Details	1.107	Block 1A and 1B Roof Plan	3.301	Block 3 Sections							
		L1.17	Access Staircase - Details	1.108	Block 5B Garage Plan Level G2	4.001	Block 4 Development Data							
		L1.18	Lighting Plan	1.109	Block 5B First Floor /Garage Plan Level G1	4.101	Block 4 Garage Plan Level G2							
		L1.19	Streetscape Sections	1.110	Block 5B Mezzanine Garage Plan Level	4.102	Block 4 Garage Plan Level G1							
		L1.20	Streetscape Sections	1.111	Block 5B 2nd Floor Plan	4.103	Block 4 First Floor Plan							
		L1.21	Streetscape Sections	1.112	Block 5B 2nd - 6th Floor Plan	4.104	Block 4 2nd Floor Plan							
		L1.22	Green Area Ratio Calculations	1.113	Block 5B 7th Floor Plan	4.105	Block 4 3rd-7th Floor Plan							
				1.114	Block 5B Roof Plan	4.106	Block 4 Roof Plan							
				1.201	Perspective	4.301	Block 4 Sections							
				1.202	Perspective	5.001	Block 5-A Development Data							
				1.203	Perspective	5.101	Block 5-A Garage Plan Level G2							
				1.204	Perspective	5.102	Block 5-A Garage Plan Level G1							
				1.205	Perspective	5.103	Block 5-A First Floor Plan							
				1.206	Perspective	5.104	Block 5-A 2nd Floor Plan							
				1.207	Perspective	5.105	Block 5-A 3rd-6th Floor Plan							
				1.221	Block 1A Elevations	5.106	Block 5-A 7th Floor Plan							
				1.222	Block 1A Elevations	5.107	Block 5-A Roof Plan							
				1.223	Block 1A Elevations	5.301	Block 5-A Sections							
				1.224	Block 1A Elevations	6.001	Block 6 Development Data							
				1.225	Block 1A Elevations	6.101	Block 6 Garage Plan Level G2							
				1.226	Block 1A Elevations	6.102	Block 6 Garage Plan Level G1							
				1.227	Block 1B Elevations	6.103	Block 6 First Floor Plan							
				1.228	Block 1B Elevations	6.104	Block 6 2nd Floor Plan							
				1.229	Block 1B Elevations	6.105	Block 6 3rd-7th Floor Plan							
				1.230	Block 1B Elevations	6.106	Block 6 Roof Plan							
				1.231	Block 1B Elevations	6.301	Block 6 Sections							
				1.232	Block 1B Elevations	7.101	Site Section							
				1.233	Block 1B Elevations	7.102	Site Section							
				1.234	Block 5B Elevations	7.103	Site Section							
				1.235	Block 5B Elevations	7.104	Site Section							
				1.236	Block 5B Elevations									
				1.237	Block 5B Elevations									
				1.238	Block 5B Elevations									
				1.239	Block 5B Elevations									
				1.240	Block 5B Elevations									

Updated Sheet
New Sheet



© 2015 SK&I Architectural Design Group, LLC

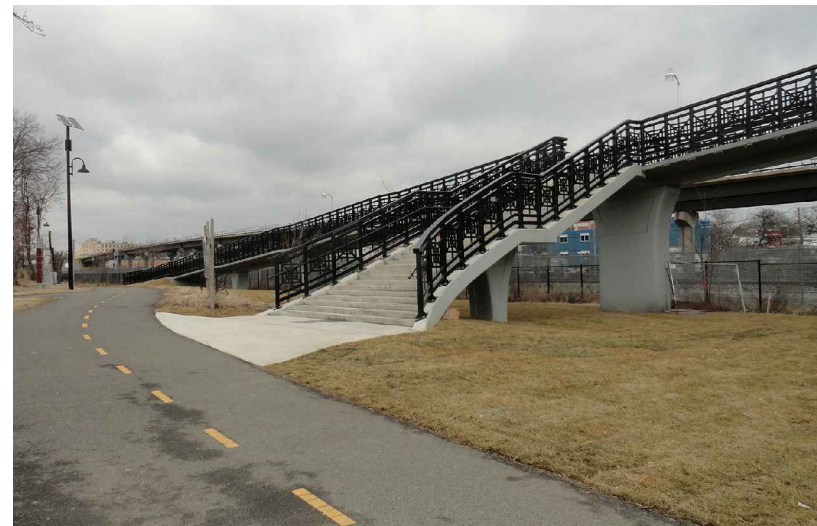




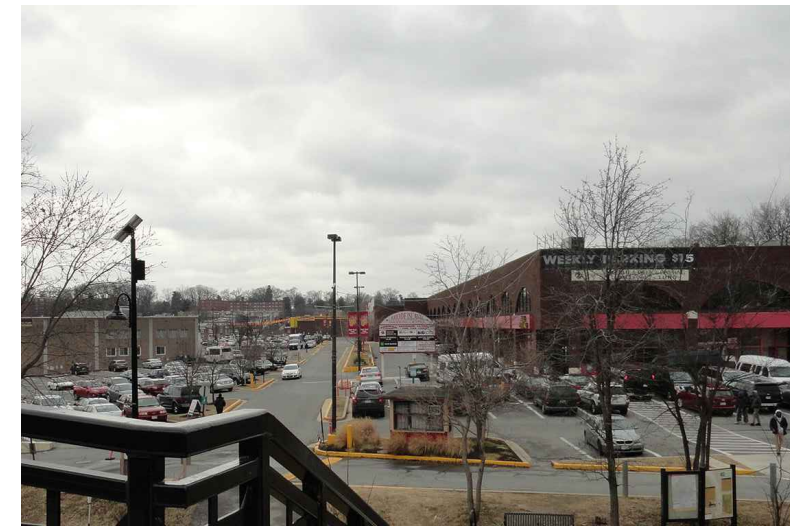




A. The Vantage Residences



B. Metro Stairs



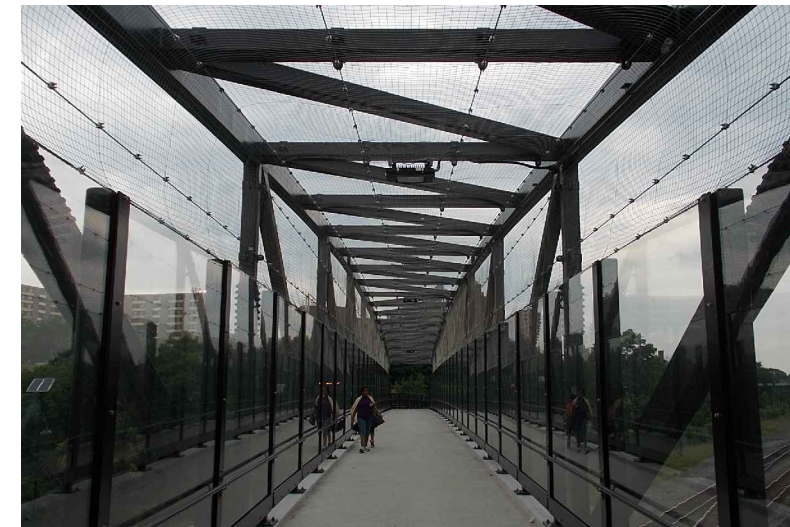
C. Site from Metro Stairs



D. Rhode Island Avenue Row Apartments



E. 4th and Rhode Island



F. Metro Bridge



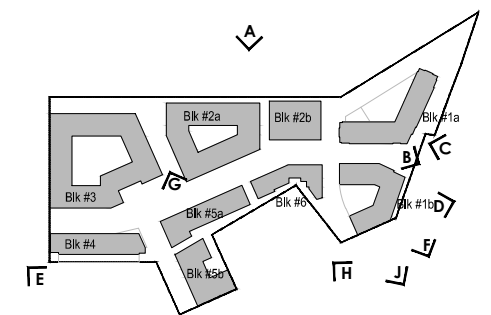
G. Existing Retail



H. Greater Mt. Calvary Holy Church



J. Silos on Rhode Island Ave.



KEY PLAN

MRP REALTY

680 Rhode Island Ave. | Washington, DC

April 29, 2016 | 0.05



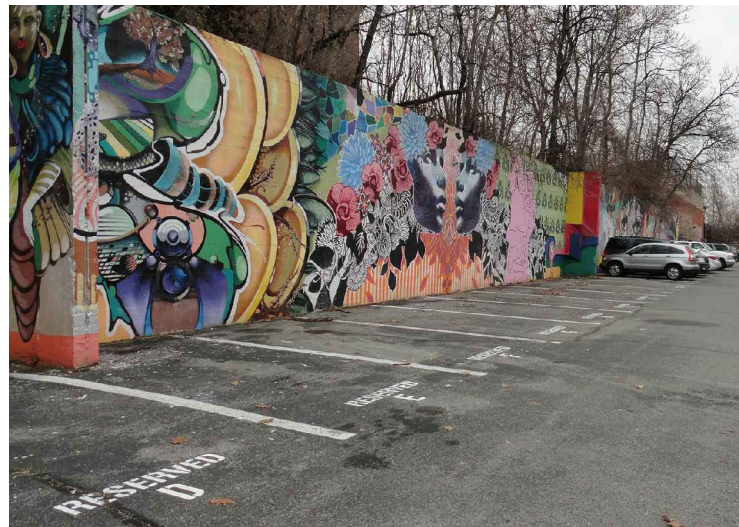
A. Metro



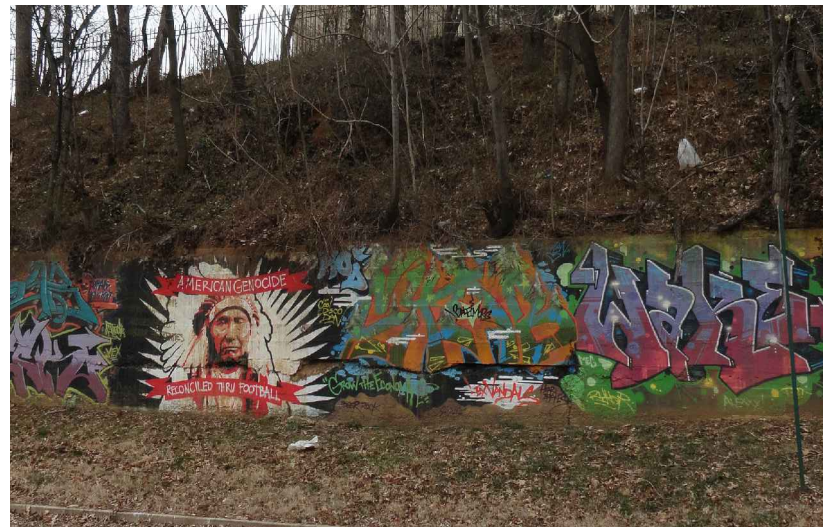
B. Metro Bridge



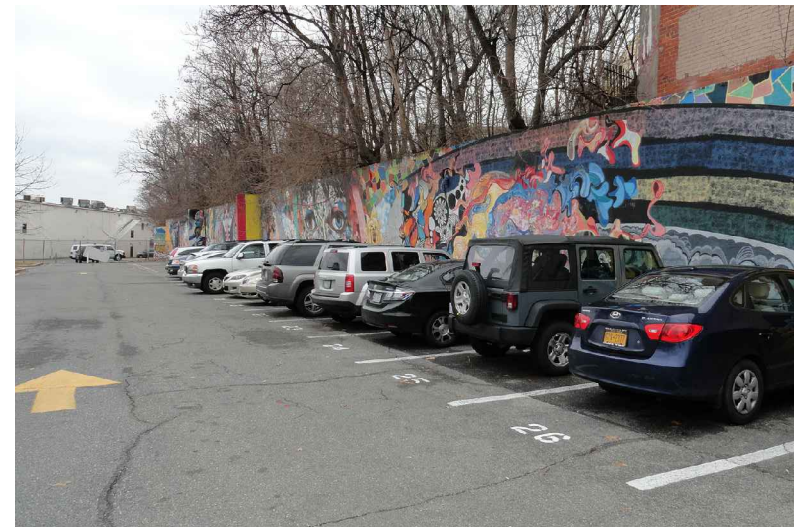
C. Metro



D. Retaining wall



E. Retaining wall



F. Retaining wall



G. Retail

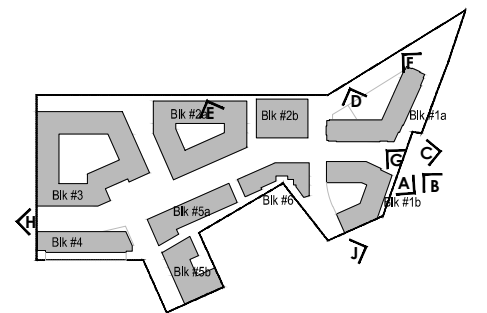
MRP REALTY



H. Adjacent Neighborhood



J. Rhode Island Ave. Underpass



KEY PLAN

680 Rhode Island Ave. | Washington, DC

Context

April 29, 2016 | 0.06

